

# Trout Unlimited

## Little River Chapter



### NEXT MEETING

Thursday

February 23rd

**Calhoun's**

Maryville



Our program for the next meeting is Wendy Teffeteller, science teacher at Episcopal School of Knoxville and some of her students, and they'll share their Trout in Classroom experiences.

## President's Corner

It's February and Spring is just around the corner. I have seen Forsythia blooming and I have heard that spring mayflies have been seen. I have not been fishing yet. Every time the fishing fever strikes the weather turns ugly but that is the nature of this time of year. Patience! Spring is just around the corner!

Now is the time to be filling the fly box and making sure the fishing equipment is ready to go. To help with that, there will be a tech class at 5:30 before the next meeting February 23 to discuss rod and reel maintenance. It's easy to throw the rod and reel in the rack or leave it in the tube after an outing but now is the time to check them out and clean them up.

Steve Young and I attended the initial meeting of the new Maryville Healing Waters program. For our members who are veterans or members who just want to volunteer to help our military veterans, this is a great program. They are folks who just want to be on the water so I hope we will help them. this time of year. Patience! Spring is just around the corner!

Now is the time to be filling the fly box and making sure the fishing equipment is ready to go. To help with that, there will be a tech class at 5:30 before the next meeting February 23 to discuss rod and reel maintenance. It's easy to throw the rod and reel in the rack or leave it in the tube after an outing but now is the time to

(Continued from Page 1) check them out and clean them up.

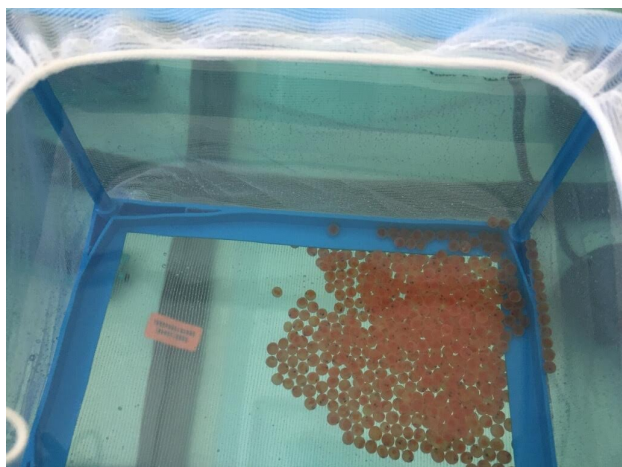
Steve Young and I attended the initial meeting of the new Maryville Healing Waters program. For our members who are veterans or members who just want to volunteer to help our military veterans, this is a great program. They are folks who just want to be on the water so I hope we will help them.

## Trout in the Classroom

by Joyce Frey

By the time you read this we will have started the spring season with 1,800 eggs going into 9 schools. If its anything like the past, the students will be so excited to get started, especially those that haven't had any exposure to the tanks and fish before.

We are looking for a new TIC coordinator for the Little River Montessori School in Alcoa. In case you're thinking about joining us and wondering what's involved, below are the responsibilities for the TIC school coordinator:



- Support the teacher and principal
- Set up and maintain equipment
- Deliver eggs to the school
- If needed, train teachers on basic aquarium hygiene (cleaning, testing, etc.)
- Provide troubleshooting when needed
- Provide continuity during changes at the school (moving a tank to a new classroom/teacher)



- Coordinate activities and timing of trout release field trips with the TIC coordinator (Joyce)
- Train any assistants

It may sound intimidating, but it doesn't all happen at the same time and, of course, you won't be alone. There are currently more than a dozen of us willing to help you through the process. Please think hard about getting involved. This is a wonderful program that teaches the students to begin fostering a conservation ethic and learn to appreciate our water resources.

Contact me, I'll be glad to answer any questions you might have. You can also join any of us when we go to our schools to get a first-hand feel for what's involved. You can email me at [jmfrey@comcast.net](mailto:jmfrey@comcast.net).

**“Many go fishing all their lives without knowing that it is not fish they're after”** -Henry David Thoreau



## TIE 'N LIE: YELLOW PALMER

The room at the Casual Pint was booked on the 27<sup>th</sup> of this month so we will move to Monday the 20<sup>th</sup> at The Casual Pint in Maryville from 6:00 till 8:00. We will be tying a Smoky mountain classic, the Yellow Palmer. No one is sure where or how this fly originated whether it is from the Palmer Creek area or the original tier was of the Palmer family in Cattaloochee valley or from the tying technique of palmering the hackle around the hook shank. It's a simple fly to tie and it catches fish.

Hook:	Standard dry fly size 12- 18
Thread:	Yellow size 8
Tail:	Grizzly and Brown Hackle Fibers
Hackle:	Grizzly and Brown
Body:	Yellow Dubbing



## To See or Not to See, That is the Question -Mike Bryant

My eyesight has never been stellar. As I get long in the tooth, spotting a fish or a fly on the water continues to be an increasing challenge. In any season of the year, I'm constantly studying which dry flies are more visible than others. During those hot summer months I, like so many others, start tying on beetle patterns. Specifically foam beetles, with the hope that a big fly like a beetle will be easy to spot by trout and me. Knowing foam is lighter than water, flies tied with foam should float well and hence be more visible. But I have never been satisfied with my foam beetles (either bought or my own tie) especially in tumbling or rough water. Once the fly became submerged in the tumbling water, it was never as easy to spot. About the same time I was trying to figure out a better, easier to see foam beetle pattern, I saw the Grumpy Frumpy pattern in one of the fly fishing magazines. The Grumpy Frumpy was design by Clark "Cheech" Pierce to catch cutthroat out west. It had every trigger, complete with all the bells and whistles, known to man. A key feature of the fly was the use of foam. I modified the design and added a second layer of foam, thinking surely this fly with all its foam and

white poly indicator would float well and be easy to see with these aging eyes. But after tying a half dozen or so and field testing up on Middle Prong, I was still frustrated with how hard it was to see on the water. So back home I dunked a few in my slant tank to see what was going on. Interesting enough, the fly did float. But once submerged under water, it did not break the surface film as it floated back up. Apparently foam has some level of attraction to water meaning it doesn't repel it. So the top surface of the foam struggles to break through the surface film resulting in a fly that is hard to see on the water.

I tried more layers of foam, different types of foam, even different post designs but the result was the same. I couldn't figure out how to keep the foam fly on top of the water. Then the Ahha! moment hit me. What repels water and easy to apply? Scotchguard. The same stuff you sprayed on your track seats to keep that ketchup dripping from your McDonalds french fries from leaving a permanent stain. (Continued next page)

I sprayed some Scotchguard on the top of the foam and it the result was dramatic. Even after the fly is submerged, as it rises the top of the foam treated

with Scotchguard repelled the water at the surface and broke through the surface film and easier to see.

Now all of my Backward Beetles have a Scotchguard sprayed on the top layer of foam and a dot of orange fluorescent paint on the top as well. After tumbling through some rough current the fly remains on top of the surface and the orange dot is easy for me to see (and not to the trout). Give it a try. Let me know what works for you.

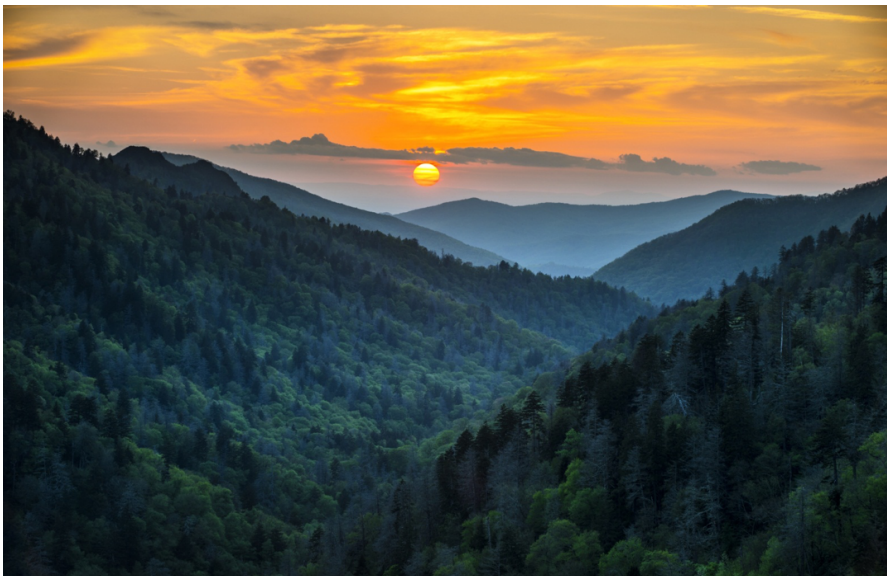
## Trout Unlimited 2017

### Southeast Regional Meeting

Gatlinburg, Tennessee

April 21 – 23, 2017

Come join us and be a part of the many faces of Trout Unlimited during a weekend of learning, making new friends or reconnecting with old friends and to have fun! The 2017 TU Southeast Regional Meeting will have something for everyone. Hear and participate in presentations and panels on:



*A big THANK YOU to Casual Pint for donating space for Chapter Meetings!*



- Families, Youth and TU
- New invasive species threats to the region
- New stream mapping technologies that will help protect and restore our watershed
- Womens initiatives and programs
- Youth education
- Improving communications in today's high tech world
- Tailwater water flow management and the impact on aquatic life

On Friday, there will be conservation tours. Friday night will include a social hour and a showing of the Orvis flyfishing movie (the movie is free). Saturday night we will have Calhoun's BBQ in the Great Smoky Mountains National Park!!

**Everyone is welcome!** The Southeast Regional Meeting will be held in iconic Gatlinburg, Tennessee nestled next to the incredible Great Smoky Mountains National Park! Enjoy the family entertainment in Gatlinburg and / or spend time in the Park fishing for wild trout only minutes away from

the Glenstone Lodge. Spring time in the Smoky Mountains is magical! (Continued next page)

# Southeast Regional Meeting

## Details

Registration is now open. For more information, please click on our Regional Meeting website

[www.tuseregional2017.org](http://www.tuseregional2017.org)

*The Mountains are Calling... The Trout  
are Rising..... Come Home to Tennessee!*

## VOLUNTEER NEWS

Given below is a schedule of Park Service work requiring Trout Unlimited volunteer support. As shown in the notes of the schedule for help with any of the Tennessee side of the Park, contact:

Charlie Chmielewski

865-661-7325

[charlieflyfish@gmail.com](mailto:charlieflyfish@gmail.com)

Acid Deposition water sampling volunteers have been identified and many are attending an organizational and information meeting on Saturday, February 11 at GSM National Park Headquarters.

We have a very good group of volunteers identified except for one route. That route is the Upper Little River Route that requires about a 15 mile hike. If you are interested in helping on that route or know or hikers who would be interested in that route, please contact Charlie.

### 2017 GRSM Fisheries Volunteer Sampling Schedule

The following list is designed to make individuals and volunteer groups, who would like to assist fisheries activities in the Park, aware of upcoming project dates and meeting locations. If you need further information, please contact Caleb Abramson (865-436-1577) [Caleb\\_Abramson@nps.gov](mailto:Caleb_Abramson@nps.gov) or Matt Kulp (865-436-1254) [Matt\\_Kulp@nps.gov](mailto:Matt_Kulp@nps.gov)

Date	Sample Type	Priority	# TU Volunteers	Cooperators *
February 11	Acid Deposition Training Session - Park Headquarters Conference Room, Gatlinburg (9:00AM) - FREE breakfast	High	All Group Leaders / Need Volunteers!	TU, NPS, UT
March 18-19 #	Bi-Monthly Acid Deposition Sample	High	8 - 10	TU, NPS, UT
March 25	TN Little River Clean-Up Day - meet at Metcalf Bottoms picnic area (9:00AM)	Medium	All Volunteers	NPS, TU, Others
May 20-21 #	Bi-Monthly Acid Deposition Sample	High	8 - 10	TU, NPS, UT
June 22	Little River Trout Camp, Tremont, TN - volunteers will help with classes and electrofishing demo	High	2 - 3	TU, NPS
July 10 - 13	Anthony Creek Brook Trout Restoration - Meet at Abrams Creek Picnic Area for transport up trail	High	8 - 10	TU, NPS, TWRA
July 15 - 16 #	Bi-Monthly Acid Deposition Sample	High	8 - 10	TU, NPS, UT
July 17	Large Stream IBI Sample (Cataloochee Creek) - Sample at the Steel Bridge at the Asbury Trail Crossing near the USGS River Gauge	Medium	5 - 7	NPS, TVA, TU
July 18	Large Stream IBI Sample (Little River) - Sample site just above Elkmont roughly 200m upstream of Little River trailhead	Medium	5 - 7	NPS, TDEC, TVA, TU
July 18	Large Stream IBI Sample (West Prong Little River) - Meet at the parking lot next to bridge at confluence of MP and WP Little River.	Medium	5 - 7	NPS, TVA, TU
July 19	Large Stream IBI Sample (Abrams Creek) - Meet at the Abrams Creek Ranger station parking lot.	Medium	5 - 7	NPS, TVA, TU
July 20	Large Stream IBI Sample (Straight Fork) - Meet just upstream of park gate on Straight Fork Road upstream of fish hatchery.	Medium	5 - 7	NPS, TVA, TU
July 24 - 27	Population Sampling - Little Cataloochee Creek - 3-Pass Depletion Sampling, Treatment Prep on Little Cataloochee Creek	Medium	5 - 7	NPS, TU, NCWRC
August 14 - 17	Hazel Creek 3-Pass Depletion and IBI Sampling - Strenuous field work. Limited to 2 volunteers (call Matt for details).	High	8 - 10	TU, NPS, NCWRC
August 21 - 22	Bunches & Flat Creek Evaluation - High elevation brook trout electrofishing (requires one night camping)	Medium	2 - 3	NPS, TU
September 6 - 8	Little Cataloochee Creek Treatment Prep - Setting live cages, calculating flows, setting up treaters/detox on Little Cataloochee Creek	Medium	5 - 7	NPS, TU, NCWRC
September 16 - 17 #	Bi-Monthly Acid Deposition Sample	High	8 - 10	TU, NPS, UT
November 18 - 19 #	Bi-Monthly Acid Deposition Sample	High	8 - 10	TU, NPS, UT

\* Cooperators  
TU - Trout Unlimited  
NPS - National Park Service  
UT - The University of Tennessee  
TDEC - TN Dept of Environment & Conservation

TWRA - Tennessee Wildlife Resources Agency  
NCWRC - North Carolina Wildlife Resources Commission  
PSU - Penn State University  
TVA - TN Valley Authority

# - Contact Charlie Chmielewski (TN coordinator) for team leader info and contact info on TN volunteer opportunities - Charlie Chmielewski (cell) 865-661-7325 [charlieflyfish@gmail.com](mailto:charlieflyfish@gmail.com)  
Contact Mike Kesselring (NC coordinator) for volunteer opportunities in NC (828) 736-6929 [mikessel59@gmail.com](mailto:mikessel59@gmail.com)

U:\RMS\Fisheries\_Management\Volunteers\Documentation\Reports\2017\_GRSM\_Volunteer\_Schedule.xlsx